



The Jayhawk Planner

Department of Urban Planning—University of Kansas

May 2012

View from the Chair— “20th Century Landscape” Changing



Congratulations Class of 2012!

This letter will be my last one to all of you. In spring, 2013, I will retire from KU. In my place, Stacey White will become the new Department Chair. I know she will do an excellent job, maintaining what we do well and leading the Department to meet the new challenges it will face.

\$1.4 million Commitment from Professor Black

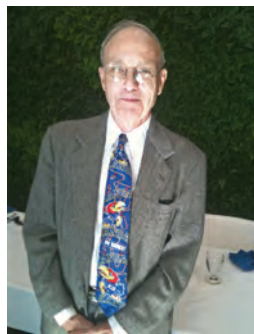
Alan Black, our own Professor Emeritus, has established a \$1.4 million commitment through KU Endowment to create KU’s first urban planning professorship.

Black has been at KU since 1981 specializing in transportation planning. He enjoyed his career at KU, particularly his work with the students. “I started teaching here 30 years ago,” said Black, “and I’ve never applied for another job since.”

Black earned three college degrees — a bachelor’s from Harvard University, where

At my retirement, I will have been at KU for forty years, and the changes I have experienced in my time here makes me feel quite good as to what our faculty members have accomplished. When I was hired we did not have a degree in planning at KU. After this spring graduation we now have 537 graduates, five joint-degree offerings, and we have been accredited about 30 years. We have 2 funded scholarships, and one more is nearly funded. As graduates you have made us proud, and personally I hope you have some fond memories of quantitative methods and my other courses.

his father was a professor; a master’s from the University of California, Berkeley; and a doctorate from Cornell University.



He reflected on why he’s able to give to KU: “I never married or had children, I received three inheritances, I live in the same house that I paid off years ago, and I drive

a Toyota Celica that I bought new in 1986, and it still runs pretty well. I’ve had the same car for 25 years, so that saves me a lot of money.”

For me, policy planning is the heart and soul of sound planning. We need to know what direction we wish to pursue. Our policies are claims for truth as to how we should progress. Eventually we must test their worthiness and provide sound arguments to continue or to alter these policies. More often than not we shape these policies with others, and in doing so, planners can educate others in this process of policy planning. If we continue to adhere to these sound principles in our graduate curriculum, our future students should become successful planners.

- Jim Mayo, Chair

Chancellor Bernadette Gray-Little described Black’s commitment as a milestone for the program, for the School and for KU. “His thoughtful support ensures that academic excellence will continue for future generations of students studying urban planning at KU,” said Gray-Little.

Black has also contributed \$158,000 to a scholarship for urban planning students. Since 1998, the scholarship has provided nearly \$50,000 in support to 12 students.

o00



2012 Student Awards

Emily Miller and Melissa Vancrum—Phi Kappa Phi for academic achievement.

Emilio Useche—Service to the Program award.

Nate Vander Broek—American Institute of Certified Planners award for professional promise.

Spotlight on Faculty Publications:

- The Prospects for Guiding Housing Choice Voucher Households to High-Opportunity Neighborhoods by **Kirk McClure** (2011) *Cityscape*.
- Accessible Transportation and the Built Environment on College Campuses by Kelly Larkins, **Anne Dunning**, & John Ridout (2011) *Transportation Research Record*.
- University Traveler’s Value of Potential Real-Time Transit Information by Ryan F. Fries, **Anne Dunning**, & Mashrur A. Chowdhury (2011) *Journal of Public Transportation*.
- Analysis of Cost Estimation Disclosure in Environmental Impact Statements for Surface Transportation Projects by Joseph Sturm, Mashrur Chowdhury, **Anne Dunning**, & Jennifer Ogle (2011) *Transportation*.
- Review of “The Environment and the People in American Cities, 1600s-1900s: Disorder, Inequality, and Social Change,” by Dorceta E. Taylor by **Stacey Swearingen White** (2011) *American Studies Journal*.
- A Role Dynamics Theory of Planning by **Jim Mayo & Bonnie Johnson** (2011) *Journal of Architectural and Planning Research*.
- Keeping It Real: What Planning Can Learn from Reality TV by **Bonnie Johnson** & Michael Graves (2011) *Journal of the American Planning Association*.
- Creating Civic Bureaucrats by **Bonnie Johnson** (2011) *International Public Management Journal*.
- Glass Walls in Urban Planning: An Examination of Policy Type and Gender Segregation within a Profession by **Bonnie Johnson** and Britt Crum-Cano (Yes, ‘08 alumna Britt!) (2011) *Review of Public Personnel Administration*.

Service-learning is a teaching and learning strategy that integrates meaningful community service with instruction and reflection to enrich the learning experience, teach civic responsibility, & strengthen communities."

(National Service Learning Clearinghouse)

Practicing What We Preach—Service Learning Projects

UBPL 716—Community and Neighborhood Revitalization with Daniel Serda

Spring 2012 students wrapped up preliminary analysis of redevelopment alternatives for the old Kansas City Structural Steel Site in Kansas City, Kansas. Serda will be working this summer on community visioning, outreach and education through an EPA Environmental Justice Small Grant issued to El Centro, Inc., the owner of the site.

increase of \$9,000 per home along similar trails).

- Promote local sales revenues. (At similar trails average trail users spend up to \$400).
- Promote public health.
- Connect to Katy Trail.

KU Students Study Team—Xue Chen, Cory Davis, Whitney Morgan, Haochen Qiu, Emilio Useche, Nate Vander Broek, James Vanderloo, Chris Wichman, & Yi Xiao.



Students began the Rock Island Project in Fall '11 Intro. to Land Use Planning class with a tour of the abandoned rail corridor.

UBPL 757—Transportation Planning Implementation with Marcy Smalley

Students completed the Rock Island Corridor Trail Study for the Mid-America Regional Council's "Creating Sustainable Places" project. The 200 page report includes a sustainability assessment, a review of similar trail corridors, costs, transit alternatives, and a 3-phase implementation strategy.

UBPL 773—Environmental Planning Implementation with Stacey S. White



In Spring '12, students assisted the KU Field Station by developing a plan to enhance use of its facilities while maintaining ecological integrity. Students conducted a survey of KU faculty and interviewed 13 different stakeholders. Their final report will help the Field Station develop its niche as part of key sustainability

initiatives happening on campus.

UBPL 735—Site Planning with Bonnie Johnson

In addition to Smalley's Transportation class, 2 other KU classes worked on the Mid-America Regional Council's "Creating Sustainable Places". UBPL 735 Site Planning & Design Professor, Jeremy Shellhorn's Graphic Design classes teamed up for some "Tactical Urbanism" during the Crossroads Arts District's First Friday Event, May 5 in downtown Kansas City. What do you think of the students' art installations below?



UBPL students & faculty made rain barrels to raise money for KUs Student Rain Garden. Special thanks to Ben Hyde for his help.

The proposed trail would:

- Add 17-miles to region's trail system.
- Cost \$5.5 - 9 million.
- Serve around 100,000 – 200,000 people annually.
- Increase home values. (Average

Tactical Urbanism uses art and the urban environment to inspire citizens to strategically change their cities.



We "serve" up healthier neighborhoods when we plan sustainably.

Comprehensive Exam Makeover

Remember your comprehensive exam or is it just a blur? The exam most of you took was a series of multiple choice tests over the core and then a written exam for your specialization. Starting with the 2012 class, we have a new exam. Instead of separate tests, the comprehensive exam is now -- "comprehensive".

The new exam is a scenario in the student's specialization with guiding questions. It requires students to synthesize learning from the core and specialization courses. The student responds

with a paper, report, or memo depending on the scenario. For example, the land use exam could consist of advising a neighborhood on what they need to do to create a neighborhood plan. Every specialization has its own exam written by the professor in charge of that area.

After completing the core courses that everyone has to take and the introductory and methods courses in a specialization, a student can take the exam. This

year, students got the exams via a secure website (Blackboard) at 8:00 a.m. on Friday, March 30. They had until 5:00 p.m., Monday, April 2 to turn in their answers via Blackboard.

The exams were graded by the professor in charge of each specialization with the help of a professor from another specialization.

The faculty are focusing on how to improve the exams using valuable feedback from the first set of guinea pigs -- er, uh, students.



Makeover anyone?

City Planners in a Movie? - Yes!

The School of Architecture, Design & Planning with the help of great sponsors brought the documentaries of Gary Hustwit to KU including his 2012 film, *Urbanized*. The series started with *Helvetica* which explored graphic design through one loved/hated font. His 2nd film *Objectified* examined industrial & product design.

Urbanized focuses on the creation of cities and asks the world's leading planners, policymakers, and thinkers to discuss the issues and strategies behind cities. Hustwit explains, "I had the first ideas for *Urbanized* in 2007, when I traveled to over 100 cities for the screening tour for *Helvetica*. I hadn't planned on making a series of films about design, but after making *Helvetica*, I was thinking a lot about all the ways design affects our daily lives. This led to the second film in the trilo-

gy, *Objectified*, But the design of our cities struck me as the area of design that had the most impact on our lives. Where we live, how we get around, where we work, how we relax, what opportunities we're afforded; the physical design of the city dictates all of these factors."

Thank you to our sponsors—the KS Chapter of the American Planning Association, AIGA Kansas City, University Honors Program, KU Memorial Unions, School of the Arts, Dept. of Design, Dept. of Geography, and Dept. of Film & Media Studies.



Students enjoy *Urbanized* & discussing cities with filmmaker Gary Hustwit, April 9, 2012.



Did You Know? Some Kansas City, KS history thanks to new research by Daniel Serda

"The segregation of Mexican students in Kansas City, Kansas was not confined to the immigrant barrios of Armourdale and Argentine. In September 1924 a mob of at least 200 Anglo parents surrounded Major Hudson Elementary School and refused entry to four Mexican children . . ."
- Daniel Serda, *Finding Latin Roots: Hispanic Heritage in Kansas City, Kansas Preservation v.33*, issue 3, 2011.

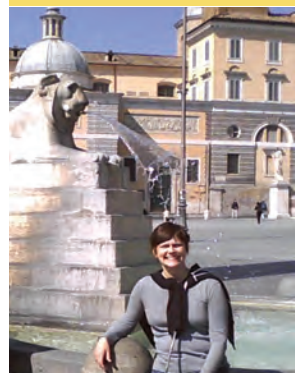
Johnson gets tenure Runs off to Italy

Assistant Professor Bonnie Johnson was promoted and awarded tenure in 2012. You can call her—Associate Professor now!

She had a little time to celebrate the good news before going to Rome for the International Research Society for Public Management conference in April.

She presented her paper, "What do Professional Planners 'Profess'? Public Values and Public Service Motivations." This paper was based on an exercise students do in her UBPL 815, History & Theory class where they compare codes of ethics from planning organizations around the world.

Also, students will know that Johnson could not resist taking the Edmund Bacon "walk" through Rome. She traveled in Bacon's footsteps tracing Pope Sixtus the V's plan for a walkable, connected Rome.



Bonnie at the Piazza del Popolo

The Jayhawk Planner

Out and About

Professor Kirk McClure was awarded a sabbatical during the fall semester of 2011 to take the position of Scholar-in-Residence with the U.S. Department of Housing and Urban Development (HUD).



wide and to assist HUD in examining the workings of the various assisted housing programs. In particular, McClure is working on the issues of poverty deconcentration through the two most active initiatives, the Housing Choice Voucher program and the Low-Income Housing Tax Credit Program.

In this position, McClure worked at HUD's Office of Policy Development and Research performing research on federal affordable housing programs. He also provided a series of lectures to HUD's staff.

By working in HUD, McClure is able to gain access to all of HUD's data on assisted housing nation-

Associate Professor Stacey Swearingen White is ready for her sabbatical this coming fall semester, 2012. Over the past year she and a team of KU researchers interviewed Kansas farmers about how they make land use decisions. She'll be working on articles and maybe even a coffee table book with great photos like this one from Goessel, KS.



Transportation Prof. Anne Dunning offers new course: UBPL 755, Planning Intercity Transportation. It explores the intercity multimodal movement of people & goods from megaregional to global scales. Students learn about rail, aviation, & marine travel, supply provision, and planning across state & national borders.

Kansas Association of Planning Students—Brown Bag Lunch & Learns for 2012

Shannon Jaax, Kansas City Public Schools' Repurposing Initiative

Rob Richardson, Wyandotte County/Kansas City, KS Economic Incentives

Bob Berkebile, BNIM & Sustainable Development



Alumni & Friends Gathering, April 16, 2012, APA Conference, Los Angeles, CA
The Jayhawk Planner hopes to see lots of Jayhawks at APA in Chicago 2013!

Students judge at Engineering's Future Cities Competition.



Whitney Morgan



Chris Wichman